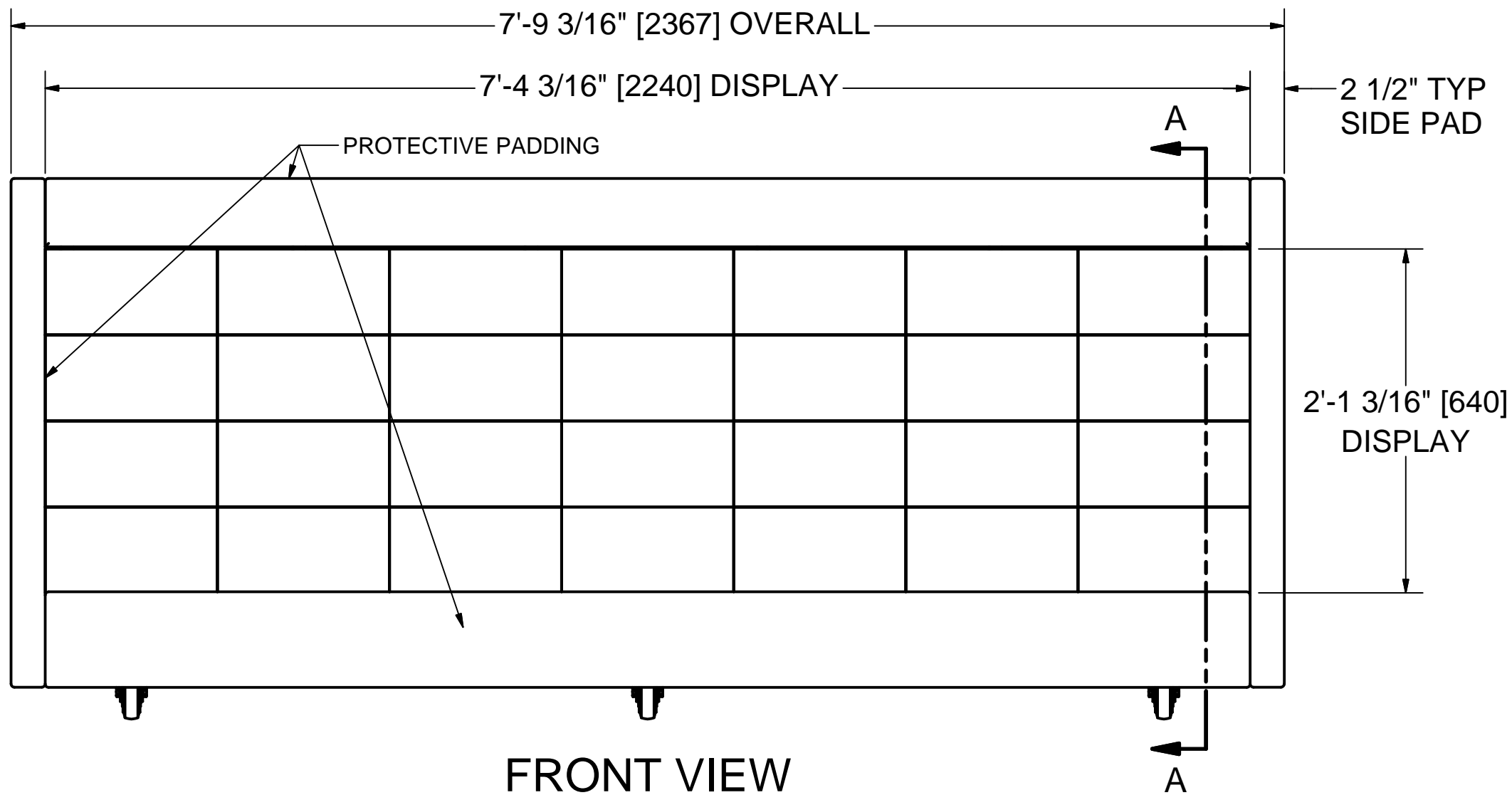


BACK VIEW



FRONT VIEW

INDOOR LED DISPLAY (VI10SF64X224C3)

- LED COLOR: RGB
- 10MM PIXEL PITCH
- 64 X 224 RESOLUTION
- LUMINANCE: 2500 NITS (cd/m²)
- ACTIVE AREA: 7' 4 3/16" L X 2'-1 3/16" H
- VIEWING ANGLE: 140° HOR. & 120° VERT.
- FRONT SERVICE
- ALUMINUM CABINET, WITH STEEL BASE

POWER CONSUMPTION

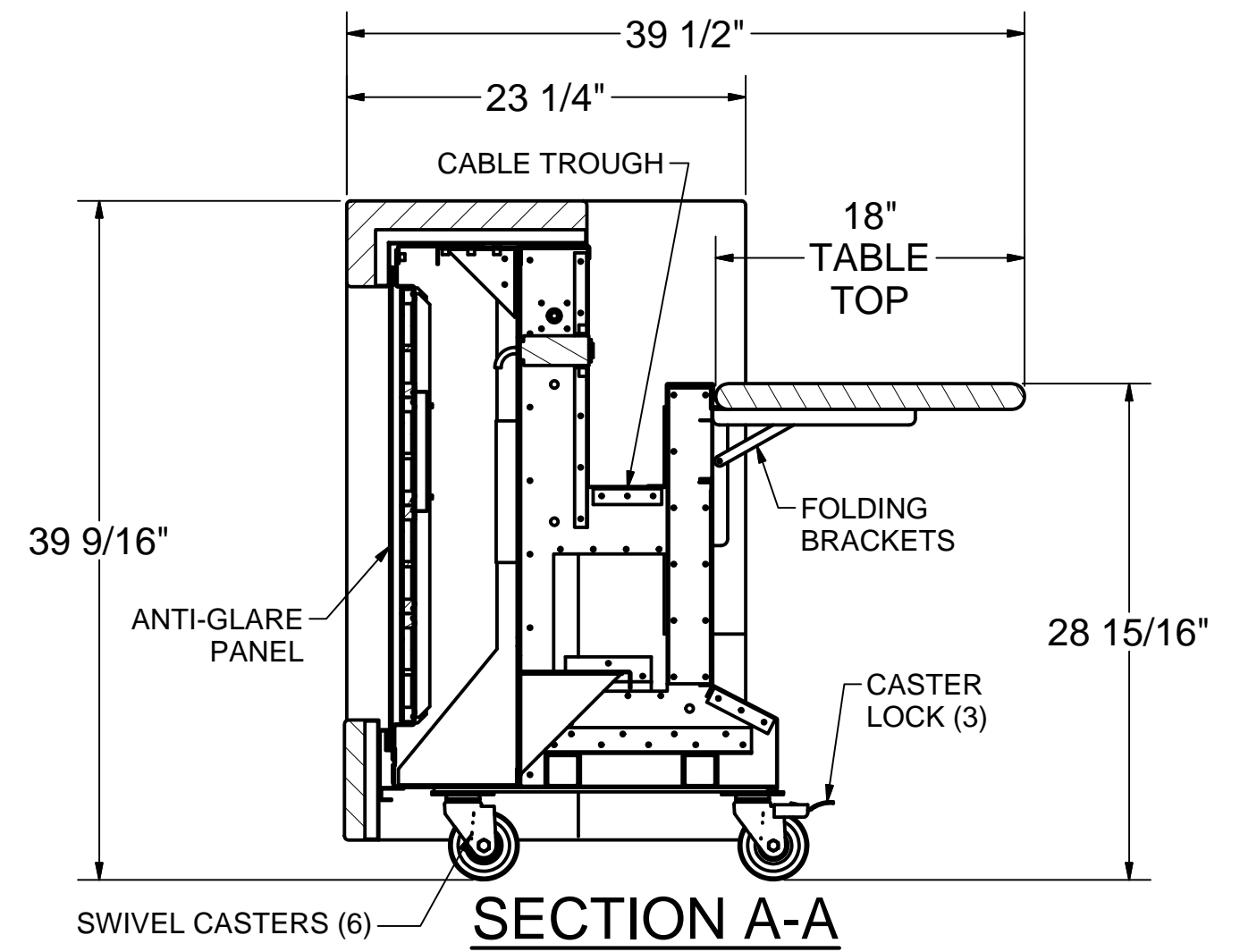
- **SEE ELECTRIC SUPPLY OPTIONS TO BE SELECTED BY CUSTOMER LISTED BELOW**
- 660* WATTS PER CST-0810 SECTION, *PLUS ADDITIONAL USER COMPONENTS
- *EACH TABLE SUPPLIED WITH (2) 12 AMP, 120V POWER STRIPS, MOUNTED BACK SIDE ABOVE TABLE TOP.

ESTIMATED WEIGHT

- 372 LBS. PER SECTION

GENERAL NOTES

1. ALL DIMENSIONS +/- 1/8" UNLESS OTHERWISE STATED.
2. POWER REQUIREMENTS ARE VALID FOR 90 DAYS AFTER THE MOST RECENT REVISION OF THE DRAWING.
3. SPECIFICATIONS SUBJECT TO CHANGE WITHOUT NOTICE
4. ALTERNATE DIMENSIONS SHOWN AS [XX] ARE MILLIMETERS



SECTION A-A

SUPPLY POWER OPTIONS (CUSTOMER MUST SELECT)

1. 208V/30A #14-2060-01: 208Y/120 VAC, 60 Hz, 3 PHASE 30 AMP MAX PER CIRCUIT (L21-30 PLUG)
2. 120V/30A #14-2060-02: 120 VAC, 60 Hz SINGLE PHASE, 30 AMP MAX PER CIRCUIT (L5-30 PLUG, TWIST LOCK)
3. 120V/15A #14-2060-03: 120 VAC, 60 Hz SINGLE PHASE, 15 AMP MAX PER CIRCUIT (STD. GROUNDED WALL PLUG)

PROJECT NAME:		REF#:	
MY SIGNATURE BELOW SIGNIFIES MY APPROVAL TO PROCEED WITH DESIGN WORK SPECIFIED HEREIN AND ACKNOWLEDGEMENT THAT I HAVE RECEIVED AND READ THE INSTALLATION INSTRUCTIONS CONTAINED IN DOCUMENT NO. 01-0500-02. CONSULT YOUR SALES ASSOCIATE IF YOU SHOULD HAVE ANY QUESTIONS OR REQUIRE ANY CHANGES TO THIS DOCUMENT			
SIGNATURE:		DATE:	
PRINT NAME:		DATE:	
DRAWN dheggen	9/29/2015	THIS DOCUMENT CONTAINS PROPRIETARY TRANSLUX INFORMATION, ANY DISCLOSURE, USE OR DUPLICATION OF THE DOCUMENT OR INFORMATION CONTAINED THEREIN FOR OTHER THAN THE SPECIFIC PURPOSE FOR WHICH IT WAS DISCLOSED IS EXPRESSLY PROHIBITED EXCEPT AS MAY BE OTHERWISE AGREED TO IN WRITING	
CHECKED		TITLE	
QA		COURTSIDE TABLE, MODEL	
MFG		#CST-0810, 10mm LED, 64 X 224	
APPROVED		SIZE C	DWG NO 01-0810-08-1
SCALE		SHEET 1 OF 1	

FAIR-PLAY

A	UPDATED SPECS MADE INVENTOR DRAWING	10/1/2018	HEGGEN
OR	ORIGINAL RELEASE	9/8/20	BEW
REV	DESCRIPTION	DATE	BY
REVISION HISTORY			