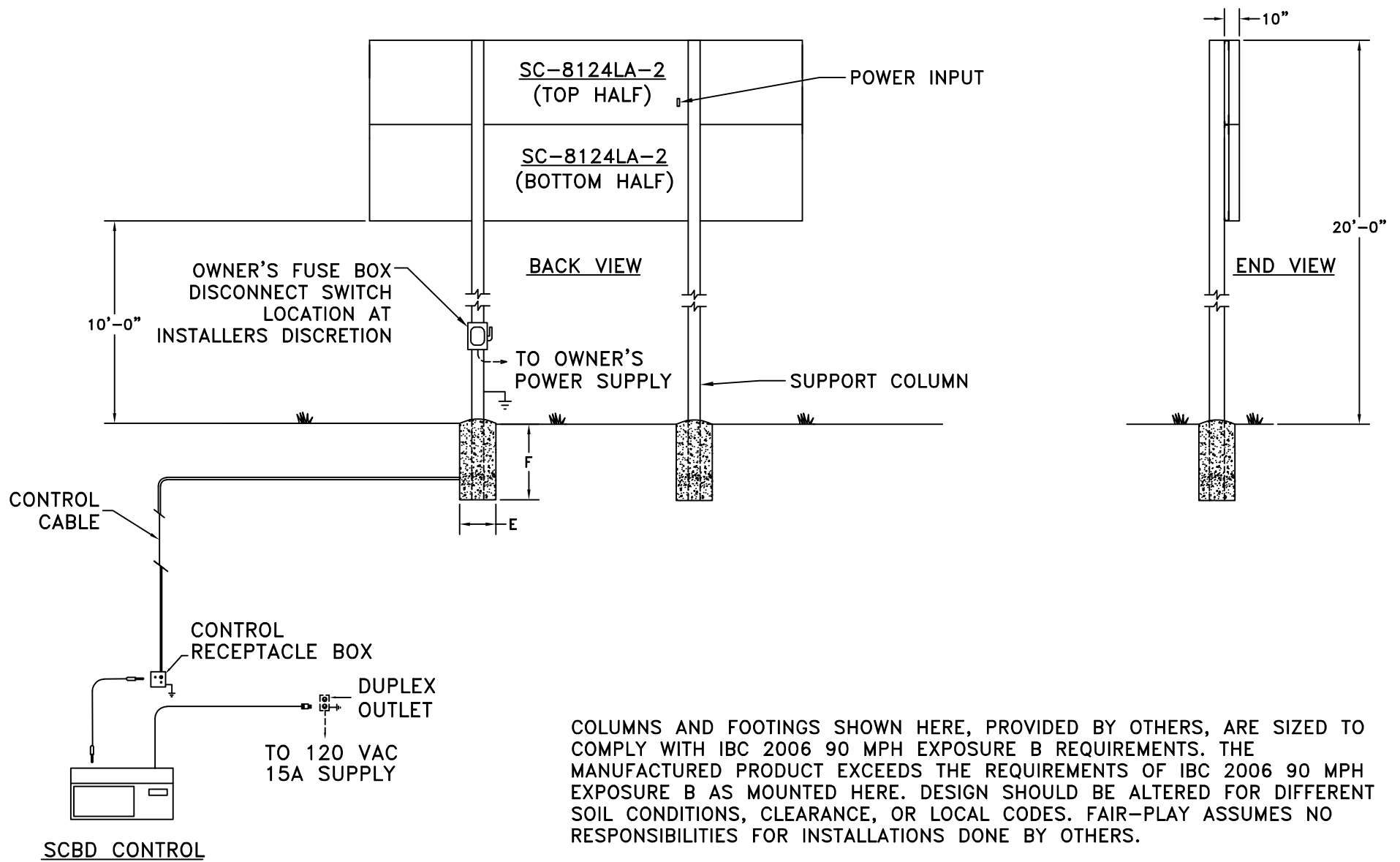
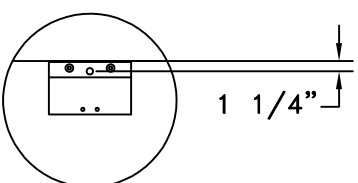


A	B	C	D	E	F	G	H	COLUMNS	POWER
6'-0"	12'-0"	4'-5 1/2"	5'-1 1/2"	3'-0"	10'-0"	10'-0"	24'-0"	W12 X 26	REFERENCE 01-8124-53-1

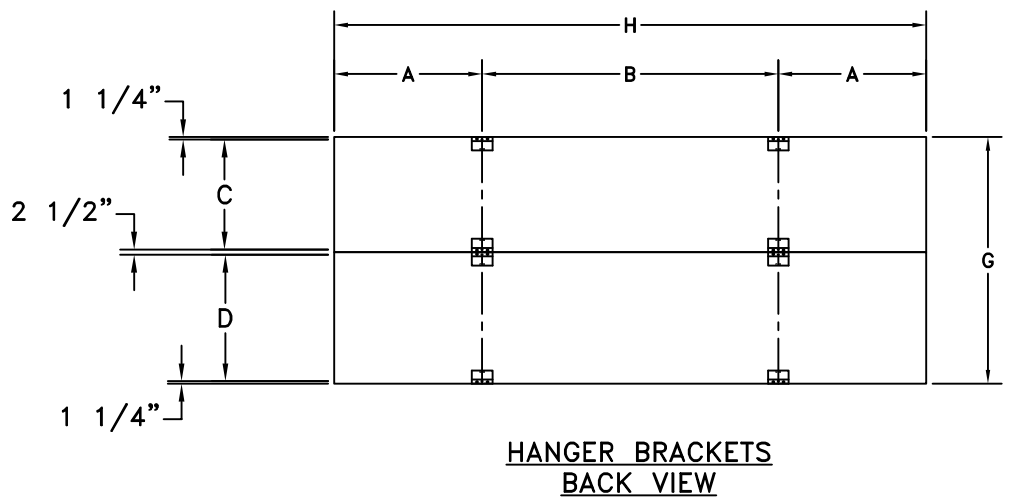
DIMENSIONS



DETAIL A
(4X SCALE)



STANDARD J HANGER BRACKET



CUSTOMER APPROVAL:		MY SIGNATURE BELOW SIGNIFIES MY APPROVAL TO PROCEED WITH THE DESIGN WORK SPECIFIED HEREIN AND ACKNOWLEDGEMENT THAT I HAVE RECEIVED AND READ THE INSTALLATION SPECIFICATIONS CONTAINED IN FAIR-PLAY DOCUMENT NO. 01-0500-01. CONSULT YOUR FAIR-PLAY SALES ASSOCIATE IF YOU SHOULD HAVE ANY QUESTIONS OR REQUIRE ANY CHANGES TO THIS DOCUMENT.	
PROJECT:	SIGNATURE:	DATE:	
REFERENCE #:	PRINT NAME:		

FAIR-PLAY	THIS DOCUMENT CONTAINS FAIR-PLAY PROPRIETARY INFORMATION. ANY DISCLOSURE, USE OR DUPLICATION OF THE DOCUMENT OR OF ANY INFORMATION CONTAINED THEREIN FOR OTHER THAN THE SPECIFIC PURPOSE FOR WHICH IT WAS DISCLOSED IS EXPRESSLY PROHIBITED, EXCEPT AS MAY BE OTHERWISE AGREED TO IN WRITING. COPYRIGHT 2022.		
	TITLE	DRAWN BY	MODEL
	INSTALLATION FOR SC-8124LA-2	BEW	B SC-8124LA-2
		DATE 11-12-19	DWG. NO. 01-8124-53-2
	SCALE 1/8"=1'-0"		
6110 AVIATOR DRIVE HAZELWOOD, MO 63042			

REV.#	DESCRIPTION	DATE	BY
A	UPDATED TITLE BLOCK FORMAT	09-06-22	BEW
OR	ORIGINAL RELEASE	11-12-19	BEW
	CHANGE		