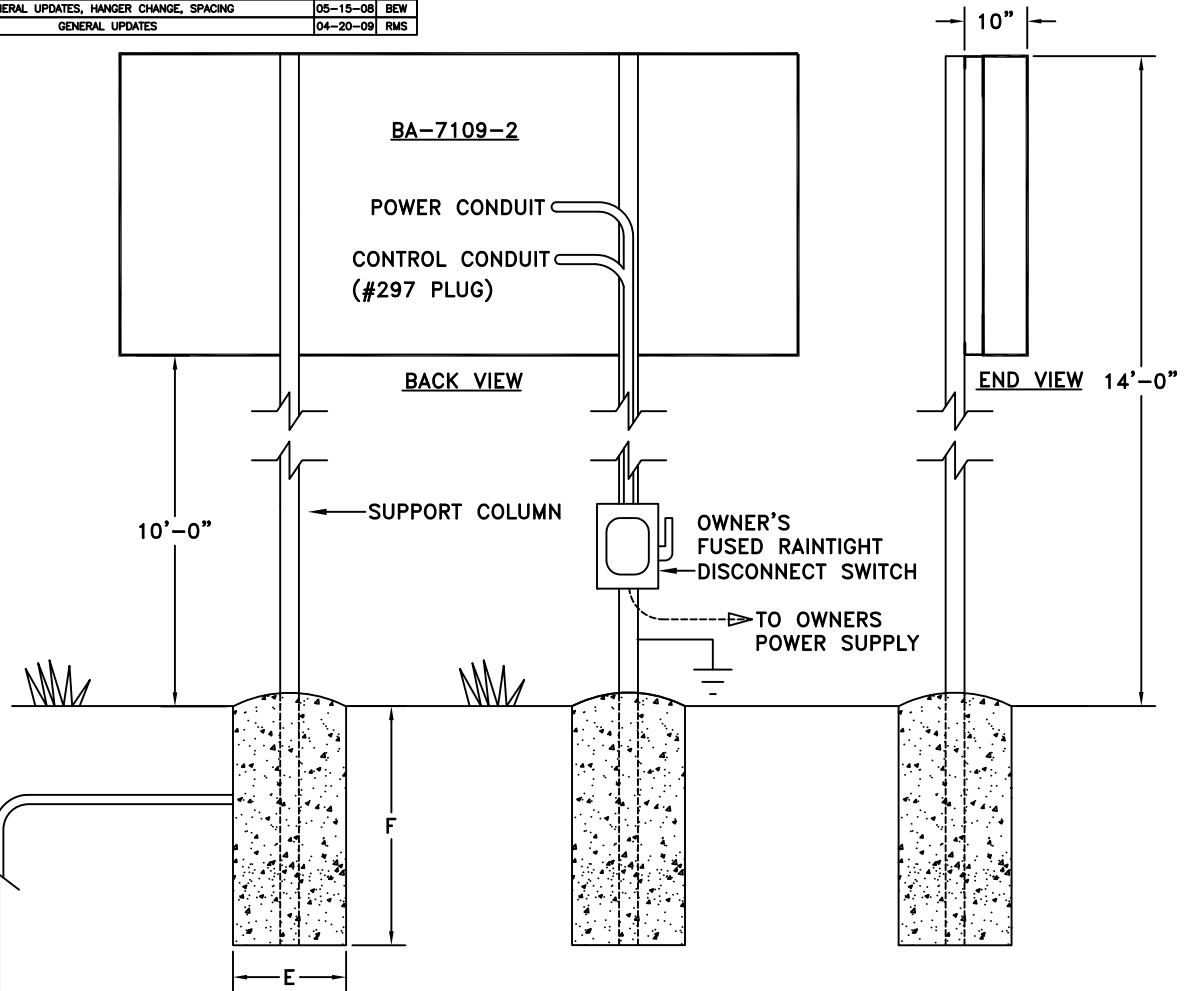


REV.#	CHANGE	DATE	BY
A	GENERAL UPDATES, HANGER CHANGE, SPACING	05-15-08	BEW
B	GENERAL UPDATES	04-20-09	RMS

022603 BEW

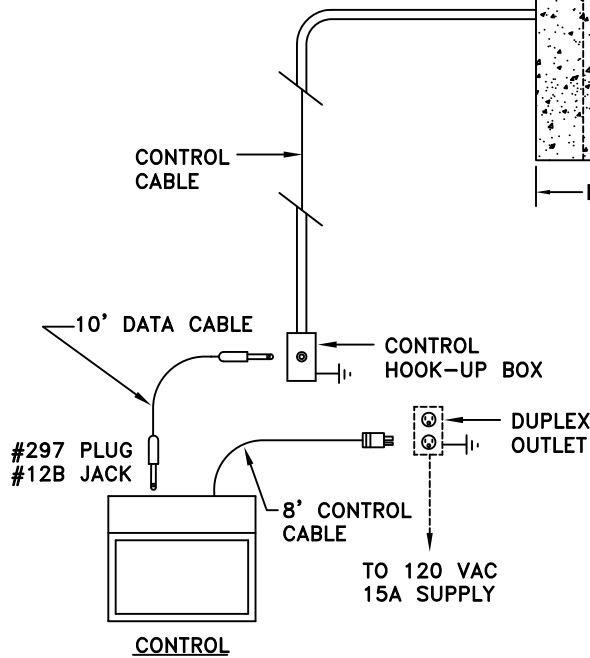


COLUMNS AND FOOTINGS SHOWN HERE, PROVIDED BY OTHERS, ARE SIZED TO COMPLY WITH IBC 2006 90 MPH EXPOSURE B REQUIREMENTS. THE MANUFACTURED PRODUCT EXCEEDS THE REQUIREMENTS OF IBC 2006 90 MPH EXPOSURE B AS MOUNTED IN THIS DRAWING. SOIL- AVERAGE WITH ALLOWABLE STRESSES OF 2500 psf. DESIGN SHOULD BE ALTERED FOR DIFFERENT SOIL CONDITIONS, CLEARANCE, OR LOCAL CODES. FAIR-PLAY ASSUMES NO RESPONSIBILITIES FOR INSTALLATIONS DONE BY OTHERS.

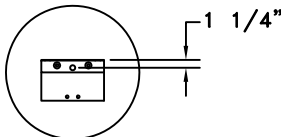
CONTROL CABLES- SUGGEST 3/4" CONDUIT BE USED FOR BURIED CABLE IN AREAS WHERE IT MAY BE SUBJECT TO MECHANICAL DAMAGE. POWER WIRES SHOULD BE ROUTED IN SEPARATE CONDUIT FROM CONTROL CABLE.

INSTALLATION DRAWING SHOULD BE REVIEWED BY A LICENSED PROFESSIONAL ENGINEER IN YOUR AREA PRIOR TO CONSTRUCTION.

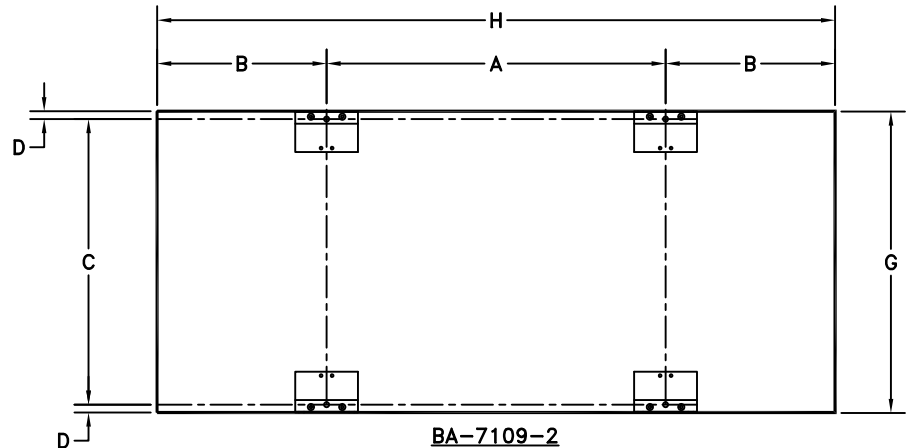
REFERENCE 01-0500-01 FOR INSTALLATION NOTES.



DETAIL A



STANDARD J BRACKET



DIMENSIONS BA-7109-2

BA-7109-2  
HANGER BRACKETS  
(BACK VIEW)

A	B	C	D	E	F	G	H	COLUMNS	POWER
4'-6"	2'-3"	3'-9 1/2"	1 1/4"	2'-6"	5'-0"	4'-0"	9'-0"	W8 X 13	REFERENCE 01-7109-05-1