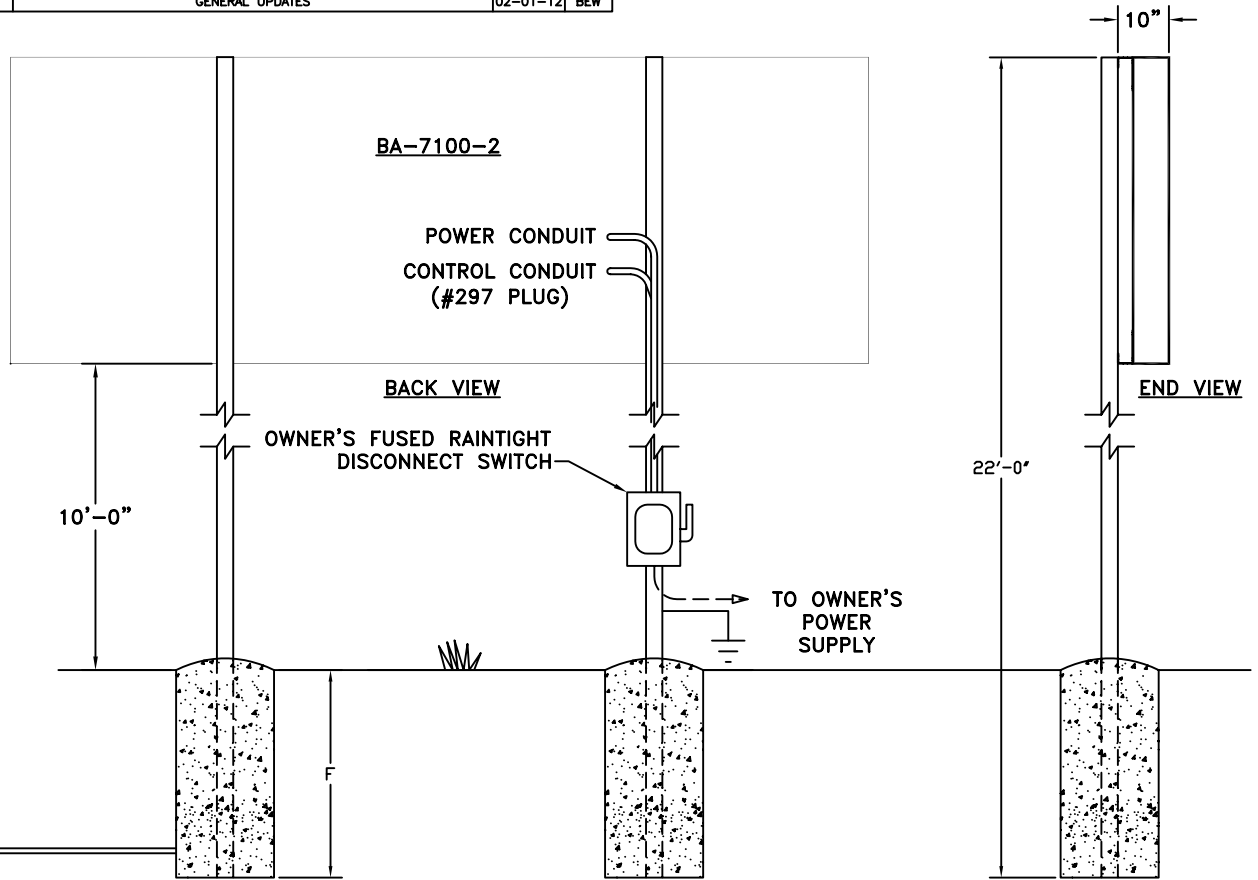


REV.#	CHANGE	DATE	BY
OR	ORIGINAL RELEASE	05-07-07	BEW
A	UPDATED FOOTINGS & COLUMNS TO 2006 IBC 90 MPH	DATE	BY
B	GENERAL UPDATES	02-01-12	BEW

050707 BEW



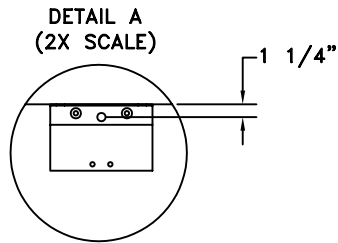
COLUMNS AND FOOTINGS SHOWN HERE, PROVIDED BY OTHERS, ARE SIZED TO COMPLY WITH IBC 2006 90 MPH EXPOSURE B REQUIREMENTS. THE MANUFACTURED PRODUCT EXCEEDS THE REQUIREMENTS OF IBC 2006 90 MPH EXPOSURE B AS MOUNTED HERE. DESIGN SHOULD BE ALTERED FOR DIFFERENT SOIL CONDITIONS, CLEARANCE, OR LOCAL CODES. FAIR-PLAY ASSUMES NO RESPONSIBILITIES FOR INSTALLATIONS DONE BY OTHERS.

CONTROL CABLES- SUGGEST 1/2" CONDUIT BE USED FOR BURIED CABLE IN AREAS WHERE IT MAY BE SUBJECT TO MECHANICAL DAMAGE. POWER WIRES SHOULD BE ROUTED IN SEPARATE CONDUIT FROM CONTROL CABLE.

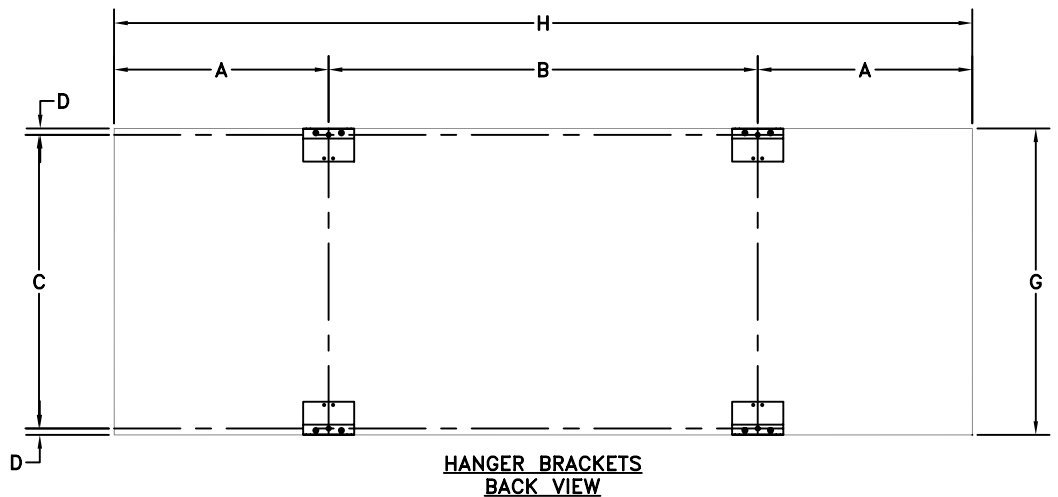
INSTALLATION DRAWING SHOULD BE REVIEWED AND APPROVED BY A LICENSED PROFESSIONAL ENGINEER IN YOUR AREA PRIOR TO CONSTRUCTION.

\* REFERENCE 01-0500-01 FOR INSTALLATION NOTES.

SCBD CONTROL  
\*IF WIRELESS  
ORDERED, CABLE  
NOT REQ'D.



STANDARD J BRACKET



DIMENSIONS BA-7100-2 (7'-0" L HANGER SPACING, STANDARD J BRACKET)

A	B	C	D	E	F	G	H	COLUMNS	POWER
3'-6"	7'-0"	4'-9 1/2"	1 1/4"	2'-6"	7'-0"	5'-0"	14'-0"	W8 X 18	REFERENCE: 01-7100-08-1